

Villa ROSE

à Manom (57100)

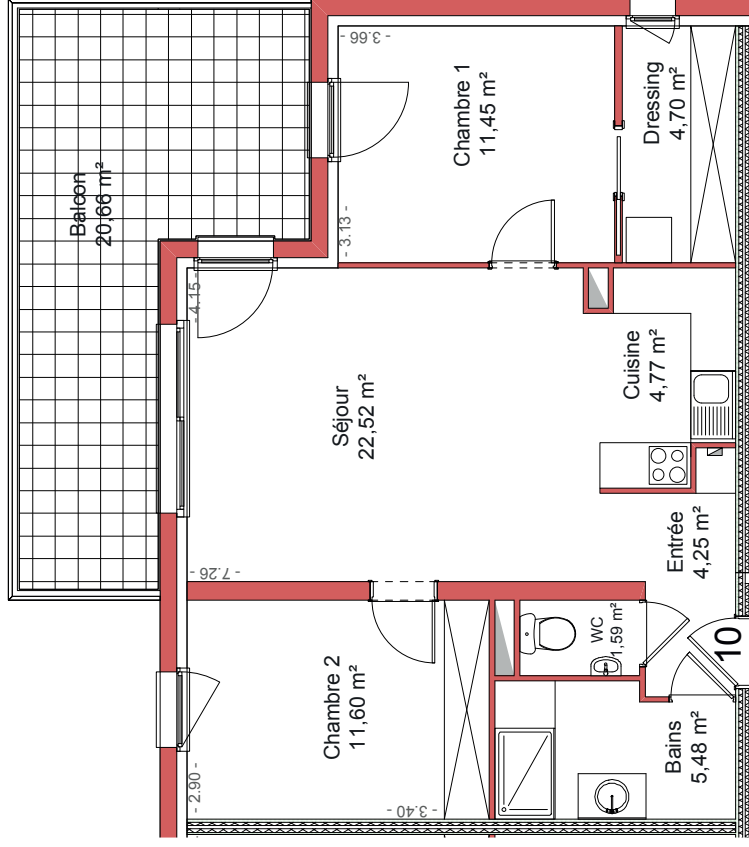
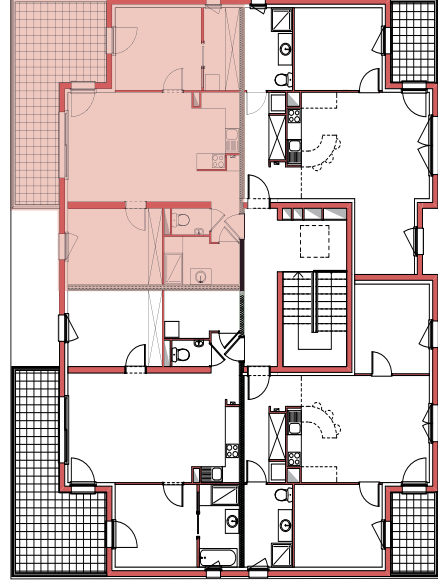


Architecte : Jean Georges CAMPRUBI
Tél : +33 3 29 87 33 43

Surfaces

Entrée	4.25 m ²
WC	1.59 m ²
Bains	5.48 m ²
Cuisine	4.77 m ²
Séjour	22.52 m ²
Chambre 1	11.45 m ²
Dressing	4.70 m ²
Chambre 2	11.60 m ²

Total Surf. bab	66.36 m ²
Terrasse	20.66 m ²
Total Surf. Utiles	87.02 m ²



Appartement 10 - T3 - Etage 3